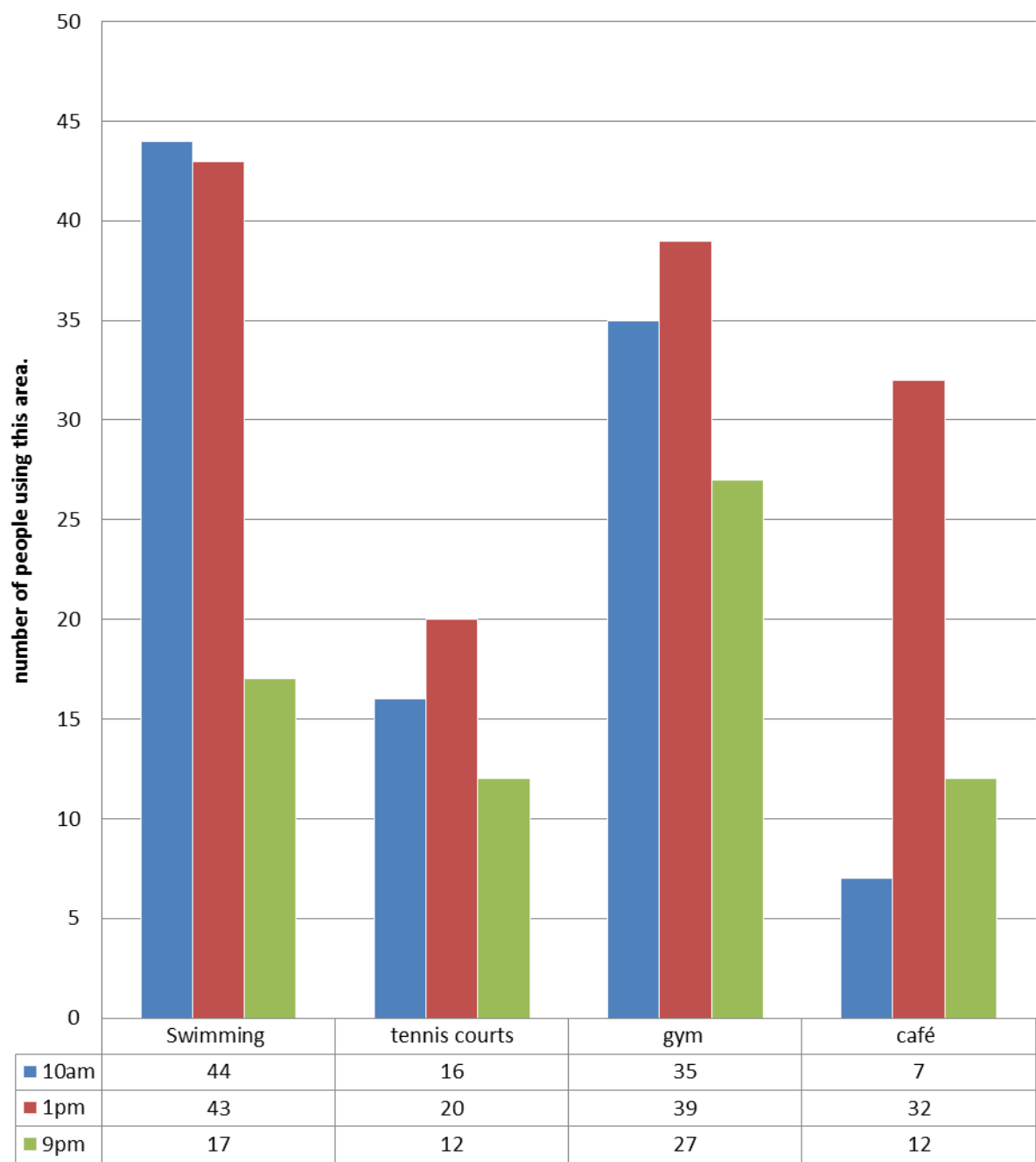


Leisure centre usage over 1 day.



Leisure centre usage bar chart.

1. What activity is the most popular?
2. What time of day is busiest in the Leisure Centre?
3. How many more people were swimming at 10am than at 9pm?
4. Why do you think the café was busiest at 1pm?
5. How many people were using the Leisure Centre at 1pm?
6. How many more people were using the swimming pool than the gym at 10am?

7. If you took another set of results at 5pm what do you imagine the results would look like?
Write a table showing the results (you have selected) at 5pm and then plot them on your own bar chart.

8. What other useful information might the Leisure Centre want to collect? Can you think of different categories – maybe giving more information about the type of people using the Centre.