



Learning Objective:
To understand what surrealism is in artwork.

Let's explore and share our thoughts on some of Kahlo's other paintings.

Click on the picture below to look at her paintings 'The Wounded Deer' and 'Roots'.

How are these paintings different to the others you've seen by Kahlo?



What can you see in these paintings?

How are these paintings similar to the others you've seen by Kahlo?

Do you like or dislike these paintings? Explain why.

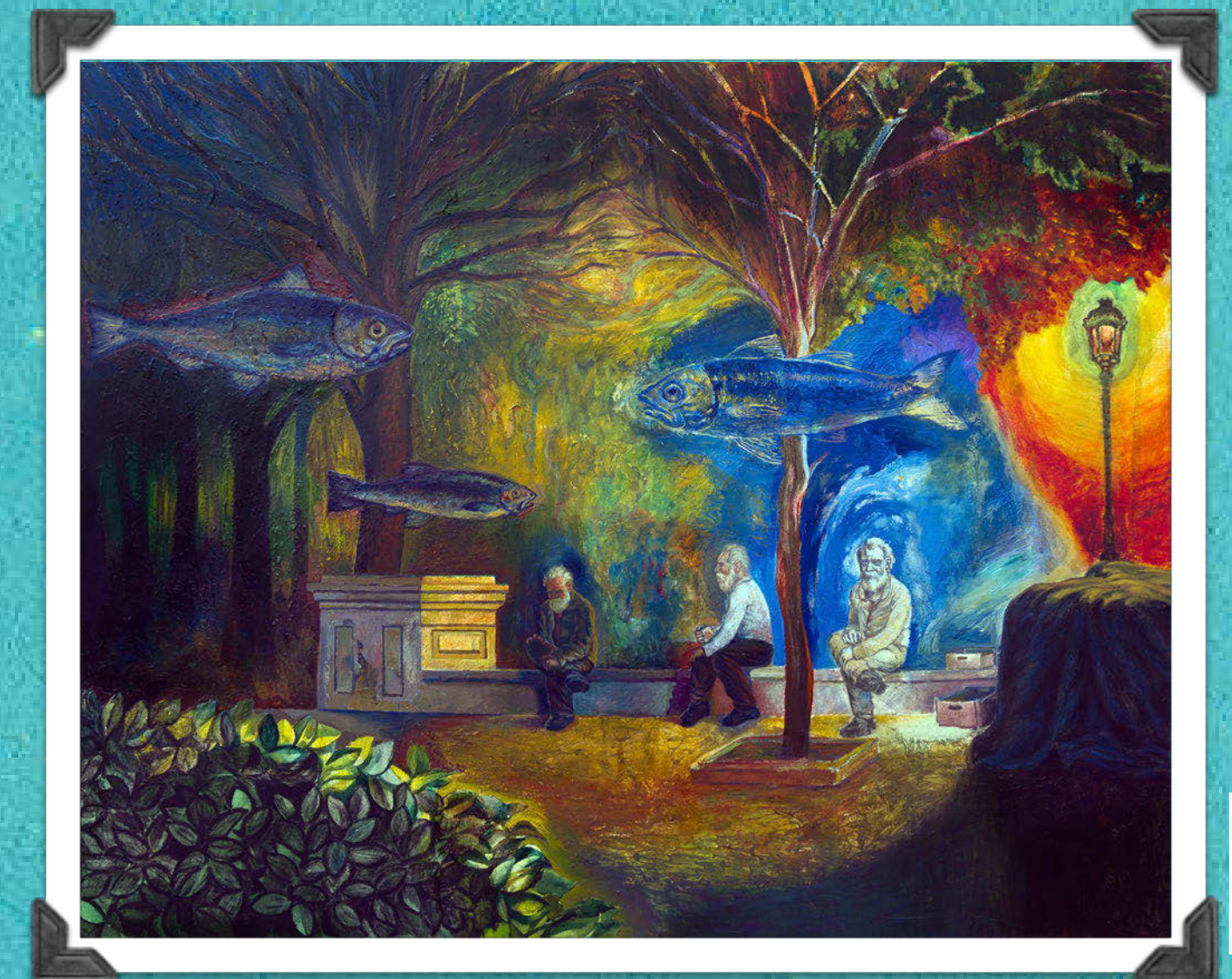
Back

Next

Kahlo's work has been linked to an artistic movement called surrealism.

Have you heard of this before?

It was becoming a popular style of art around the 1920's. The art was often unrealistic and dream-like.



Back

Next

Surreal means to be not quite real and a bit strange.
Surrealist artwork doesn't have to make sense to the audience and can often be split into two types:

Dream

The art may be based on the dreams of the artist.

Automatism

Artwork created without thinking about it.



Have you ever doodled while daydreaming? That's automatistic art!

Back

Next

Salvador Dalí was a very famous surrealist artist from Catalonia. His artwork has inspired many other pieces of artwork and been recreated by lots of other artists.



Mike Steele The Persistence of Memory (1931) by Salvador Dali via <https://www.flickr.com/photos/21022123@N04/15694508911>



Isabell Schulz Lobster telephone by Salvador Dali via <https://www.flickr.com/photos/isapisa/35427378105>

‘I am the first to be surprised by the images that I see appear on my canvas.’
(Salvador Dalí)

Back

Next

Marion Adnams was an English painter whose artwork often included two objects with little to no connection to one another in a strange landscape.

Her artwork was often dream-like. She took a lot of inspiration from her surrounding area of Derby.



Back

By Derby Museums - http://artuk.org/discover/artworks/alter-ego-60817/search/actor:adnams-marion-elizabeth-18981995/view_as/grid/page/1, CC BY-SA 4.0, <https://commons.wikimedia.org/w/index.php?curid=53891114>

www.planbee.com

Next



Kahlo's painting 'The Wounded Deer' shows her head painted on the body of a deer. Many think it is based on a pet Kahlo owned and was a wish to take on the animal's qualities of vulnerability and elegance.

Show 'The Wounded Deer'

Which animal would you paint yourself as?

Why did you choose that animal?

Back

Next

Think about the qualities of the animal you'd like to have, or show about yourself.

A dolphin might show that you're playful.

A lion might show you're brave.

A hyena might show that you're funny or giggly.

A swan might show that you're graceful.

Back

Next

Plenary

It was surrealist artist André Breton who saw Kahlo's work and immediately labelled her as a surrealist artist.

Kahlo however disagreed with this label, saying:

'They thought I was a Surrealist, but I wasn't. I never painted dreams. I painted my own reality.'



Have another look at Kahlo's paintings.

What do you think?

Was Kahlo a surrealist artist?



Back