



# YEAR 3 TERMLY NEWSLETTER: SPRING TERM 2026

## YEAR 3

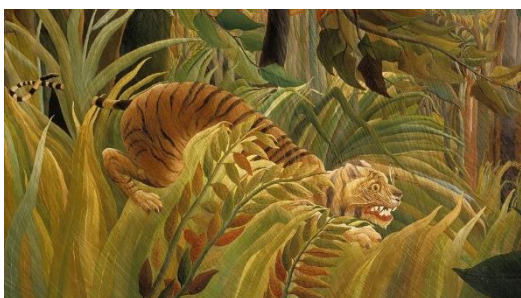
We are now beginning the first half term of Spring and it is great to see the children settled back into their class. They have quickly remembered all the routines of school life and are enjoying their learning. This term the children will be studying two topics: Tomb Raiders and Appreciate the Arts (Rainforest Rhythms.) They will take part in lots of exciting activities which cover all areas of the curriculum. We are looking forward to our trip to Leicester Museum and Art Gallery (New Walk museum) where we will find out all about the Ancient Egyptians. Thank you for supporting your child at home with learning their times tables and reading. We would like to share with you some information about what your child will be learning over the Spring Term, as well as offering you opportunities to support your child's understanding of subjects studied.

<b>HIGH EXPECTATIONS</b>	<p>We expect a <b>high standard of behaviour from all children</b> which is monitored by all staff in the academy. The Behaviour Policy (which can be found on our website) explains the academy rules, rewards and sanctions in detail.</p> <p>Every week we have a celebration assembly where achievements are shared and certificates are awarded (including Work of the Week certificates).</p> <p>Unacceptable behaviour, both in and out of the classroom, will be dealt with firmly but fairly according to the academy's Behaviour Policy. You will be informed of any major incidences, or if your child's behaviour results in two or more detentions within a period of two weeks.</p>	<b>UNIFORM</b>	<p><b>Uniform is the same for Years 1-3.</b> All pupils must wear correct uniform, including acceptable footwear. A letter will be sent home with pupils who have missing or incorrect uniform.</p>  <p>Please refer to the Uniform Policy on our website for further information, including PE kit. If you require academy uniform this can be purchased from Uniform Direct in Leicester City Centre or online via our website.</p>	<b>START OF DAY ACTIVITY (SODA)</b>	<p>For the first 15 minutes of every day there will be a focused learning activity planned by the teacher. Throughout the Spring Term, we will be focusing on arithmetic and practising times tables and related division facts.</p> <p>It is also a time to get help with any areas they are struggling with and ensure they are prepared for the day.</p> <p>If your child arrives late, they will miss this vital part of the school day. Therefore, it is important that your child arrives on time every day.</p> <p>Doors open at 8.45am daily and the school day starts at 8.50am. The gates shut at 9.00am.</p>
	<b>EXPERIENCES</b>	<p>The children are looking forward to a school trip to Leicester Museum on Wednesday 28th January 2026. They will find out lots of information about the Ancient Egyptians and will be taking part in some interesting Egyptian workshops.</p>			

Over the Spring term, children will learn about the Ancient Egyptians in our topic called 'Tomb Raiders'.



Later this term, Year 3 will be studying the topic 'Appreciate the Arts- Rainforest Rhythms'. Within this topic, children will learn about the famous 'Rainforest' artist Henri Rousseau. In science we will be learning about plants and their life cycles (linked to the rainforest.)



PHYSICAL EDUCATION

**Our PE day this term is on Thursday and Friday.** PE is part of our academy curriculum and **we expect all children to wear a full PE kit to school** so that they can take part in their PE sessions on this day.

**Jewellery should not be worn on this day.** Earrings cannot be worn during PE sessions. Teachers and Teaching Assistants are not allowed to help children remove their earrings.

If your child has recently had their ears pierced they will have to bring micropore tape to cover their earrings until they can take them out.

HOMEWORK

Please encourage your child to play on Times Table Rockstars and Number Bots to develop their multiplication and arithmetic skills **for at least 10 minutes daily on each.** In addition, we expect children to be **reading for at least 10 minutes daily.** It would be really beneficial if you could listen to your child read and discuss their book regularly to support their understanding.

WEEKLY

Each week, your child is provided with a weekly write. These will be based on words that are linked to our Routes to Resilience. Please encourage your child to actively participate in this activity as it will help to develop their writing skills.

**If you have any problems or concerns – who do you ask?**

- Class Teachers – Mrs Alton & Miss Kinchington
- Deputy Principals – Mrs Bentley & Mrs Catlow
- Principal – Mrs Latham

Thank you on behalf of the Year 3 team.